

IN THIS ISSUE

First vice
president
page 2

Chaplain
page 5

chapter
reports
page 6



*What a
Wonderful World*
ESA

What a wonderful world -- ESA

Diane Vanusek
PRESIDENT

I hope you all had a nice Christmas season and a Happy New Year. We had a nice time in Wisconsin except for the snow wall at the end of the driveway when we got home. Thank goodness for snowblowers. We were VERY thankful it did not get too cold as the house sitter could not climb the snow wall to check our furnace as we had arranged and it had not come on for a few days. The best laid plans can be thwarted by so easily by circumstances.

In December Team ESA, 60 persons strong, participated in the Memphis Marathon for St. Jude's and raised over \$21,000. There will be another marathon next year so limber up those legs and think about participating. Memphis is warmer than Minnesota at that time of the year. Also, thank you all who participated in the December St. Jude's radiothon.

ESA headquarters has started a blog as a place for states, chapters, members and other affiliates to post news, ideas, events or comments on activities within ESA. It is a way to "reach out and touch someone". This is also a way to get and give

information, to brag a little about what chapters do and just to keep up with your distant ESA family. The blog can be accessed from the ESA web site.

Our State Leadership and meeting will be held January 23, 2010, at The Crossings at Brookwood in Brooklyn Center. We have one presentation on living life to the fullest and one on conflict resolution. The presenters are both very qualified in their field and promise to be entertaining and interesting. With two Jeannes speaking, there should be "Magic in the Air" and it would add to the magic if we have a great turnout. Offer to give a member a ride, if you need a ride don't be afraid to ask (if we help others why not our members?), invite a friend or two, bring your relatives or co-workers. This program should be beneficial to all. The cost is only \$12.00. The meeting starts at 9 AM with coffee at 8:30 AM. There is even a door prize.

It is hard to believe the Minnesota convention is not that far away, April 30-May 2, 2010. Presently, we have two

workshops arranged, Sigma Chi (Shirley Laue) is working hard on the arrangements, the MARC rep will be Glenna Segall, MARC Webmaster and the IC rep will be Rose Pasillas, IC Second Vice-President. Rose sends her greetings and is eager to meet ya'll. Be sure to send in your registration early.

We are at mid-year in the sorority year. I ask all board members, elected and appointed, chapter presidents and other members to review what has been done and what they would like still like to accomplish during the rest of the year. There is plenty of time to get done what you wanted to accomplish for this year. Remember, if you are busy and active with ESA events and activities, the winter will be gone before you turn around and realize the time for winter blahs is gone!

And as you are participating in ESA, bring your friends and neighbors along so they also can forget they were supposed to have the blahs, too. Keep in mind, the 2010 IC convention planning meetings are held the second Monday of the month and anyone is welcome.

First Vice President → Terri Olson

Happy New Year! Here's to a fabulous start, a new opportunity for our personal lives, our professional lives, and hopefully, too, our ESA lives.

Each year at this time, you hear the begging, the pleading, the gentle nudging, the encouraging, and the just wishing you would consider running for a state office.

Well, I'd like to ask you to seriously think about becoming a part of the magic and the leadership opportunities that await you should you decide to give it a try. I would like you to let me know if you've even thought about an elected or appointed office and, if you have thought about it, would you drop me a note or give me a call and let me know what you were thinking, please. Do you have some questions, some concerns, some new ideas, but don't know quite how to implement those ideas? Again, please drop me a note or give me a call.

Remember, we want to re-energize ESA and that means change. Remember all of the Energizing ESA sessions we've had during the past year and a half and all the things we talked about? Well, now's your chance to put it in to action.

As we're thinking about running for state offices and volunteering for an appointed office, I want to also give you something to think about. When I joined ESA 40-some years ago, our membership

was at about 150 members. We had state meetings once a month, usually at a bank nine months out of the year - that's right, once a month! Typical chapters back then met up to three times a month, too - for a meeting, for a social activity, and for a philanthropic purpose. Our state convention was only two days long.

Obviously, times have changed, people have changed, and we've grown older, wiser, and learned a lot along the way. But, you know what has stayed the course - the total amount of our membership! Amazing!

But, we need to think about change for ESA for the next decade; we need to think about what our new, young membership wants. Many of our current members today were those same members 40 years ago (honestly, they remember me getting married, having a child, and another child, and another child. And now I'm a grandma five times! Has ESA changed? Not the warm fuzzies, the feeling of family, or even all of the good things we do for good people. And for that, I'm very proud to say I'm a member of ESA.

Yes, we have seen a lot of changes in how we conduct business. And, I'm going to propose one that I would like you to have a lot of time to think about. It's regarding our state offices. Why do you think we have such a difficult time encouraging our membership to run for an office? I

have some concerns about continuing with having a Second Vice President position in Minnesota ESA. We've voted to take away all work for this office except for handling the awards and years of service ceremonies. Well, I have been thinking about change and why we are unable to grow our membership for a long time. As your 2nd VP last year, I, personally, couldn't just wait until State Convention to do some work for you, so I thought about change in ESA and started our Energizing ESA sessions. Our current 2nd Vice President won't have an opportunity to do anything for ESA until State Convention.

I was thinking that when we voted the change in for the 2nd VP to only perform a couple of ceremonies at State Convention, the thought process might have been that this office is a training ground, but I ask, for what? In our work worlds, we don't typically sit in "training" mode for a year before we do some work. This year, my role as 1st Vice President, is to be in charge of nominations and handle the jewel pin ceremony at Convention.

I'm curious to know if part of the reason people don't want to run for the office of 2nd VP is that, potentially, this is a 4-year commitment (2nd VP, 1st VP, President, and Jr. Past President). Or is it because it's a financial burden (ask any former President and they will tell

you there are many out-of-pocket expenses). According to our by-laws, this is a by-law proposed change year. Now, I know that Alpha Sigma has proposed that we not have any changes. But, I really would like our membership to think long and hard at whether or not we should continue with keeping this office of 2nd VP. I intend to propose a by-law change that does away with this particular elected office. So, I would love to hear from you regarding your thoughts on this matter since it's time for us to think about running for offices. I would love to hear from you whether or not you agree with me. I want to understand what the membership wants, so please let me know.

This issue of the ESsAy contains a Nomination Form for you or your chapter to complete. Currently, the elected offices that are open this year are 1st Vice President, 2nd Vice President, Recording Secretary, Corresponding Secretary, and Parliamentarian. The Treasurer position is elected in odd-numbered years.

We will be having a Campaign Rally at the March meeting, so now's the time to think about how you might like to be involved with ESA next year. I look forward to hearing from you.

Junior Past President → Betty Robinson

Hello everyone. I hope you all had a great holiday season despite the cold and snow. I look forward to seeing everyone at the state leadership meeting this month. It looks like Diane and her team has put together a great agenda.

A big "Thank You" goes out to all the chapters that have sent in their donations to support the MN

Love Fund and International Disaster Fund. Your contributions are very important in keeping these funds going.

There is only 4 short months left until our state convention, so please keep in mind the MN Love Fund silent auction when making your preparations for this great event. The silent auction

is one of the biggest fundraiser for our state fund, so anything your chapter can do to help me make it a success will be very much appreciated.

I anticipate setting up for the auction on the Friday evening before the mixer, so if someone from your chapter can bring your contribution to the convention that would be wonderful.

If you have any questions and suggestions for me, please contact me either by email at: bettyarobinson@comcast.net or by phone at: 763-478-1502.

THANK YOU FOR YOUR CONTRIBUTIONS TO THE ST. JUDE SILENT AUCTION ... AT THE ST. JUDE STYLE SHOW IN NOVEMBER.

The Alpha Sigma chapter certainly is proud again this year for all the items donated to be used at the auction. AND for all the people who purchased the tickets to try their luck and to win items. It was again a fun time and lots of happy and smiling people won items. THANK YOU seems so small but remember we truly know the profits went to help save lives of children at St. Jude Hospital. Think of how many tongue depressors you purchased or how you helped buy a test tube for a research doctor. Sure it may only be a few dollars in the huge picture of research ... but without those dollars the children would not be the real winners from our efforts.

To the ESA members who attended we thank you for continuing to support the project. And to all the guests we encourage to attend we hope your heart grew a hundred fold for the heartfelt donations to the auction. Maybe you won the item you really wanted GREAT. But if you did not remember you are a winner for just donating.

I think all the words of hope and the love expressed by the many speakers and previous patients will be remembered.. And again remember us next year. We start taking donations for the next auction the minute we finish with the current auction. So Thank You for being the one who brings HOPE to the children of St. Jude.

Birdie Elkofska, Auction Chairman
Alpha Sigma Chapter

State Convention - Shirley Laue

Happy New Year! The year has arrived for 'The Great Minnesota Get Together'. April 30 and May 1 and 2 at the Marriott Minneapolis West. The i's are dotted and the t's are crossed, everything is in place for the time of your life at the 2010 Minnesota State Convention. Now all that is needed is YOU!!!!!!!!!!!!!!!

The Friday night Mixer is packed full of fun and entertainment. There will be demonstrations, contests and lots of laughter. Don't forget the apron contest, (cutiest, most original, etc.) and don't forget the baked goods and/or canned

goods for the judging. Saturday lunch will give you an opportunity to show off your Western or Cow girl/boy attire. Come prepared for the Rodeo Luncheon. You won't be disappointed with the Grand Stand performance after the installation and banquet on Saturday evening. The price is right and I promise you there will not be one dull moment. Get out your pen and the registration form and get them in the mail NOW, so you don't forget. The checks will be held until at least April 1. The deadline for the registration is April 16, 2010. There will be a prize for the first FULL registration I receive as well as the first PARTIAL registration I receive. The deadline for the \$79.00 room rate is April 9, 2010.

Help!

Contact
Terri Olson

Can you help me, please?

I have been sent several homework assignments for Leadership in Denver which I will be attending beginning February 4, 2010. I can handle some of the assignments, but I need your help for a couple of them. I am required to bring a list of:

- At least two (2) new target areas in my state that would be good for new chapter development. This could be a college or university, too. (But, remember, if you suggest it, I will be asking for your help to make it happen!)
- Friends, family, contacts that you think would be good ESA contacts but who don't live in MN (I'm supposed to bring a long list, so please can you help?)

Contact me via email or by phone. Thanks for all of your help.

ENERGIZING ESA

We need photographs. We need philanthropic brochures. We need your help. If you are unable to attend this session, please let me know so that we can arrange to pick up items that you might wish to contribute (these photos, brochures, etc. will not be returned).

We're going to build some traveling Sales Kits that you can use to help grow ESA in your area. Rushing for ESA is not a one-time event! Won't you come and help build the Sales Kits?

Here are the details:

DATE: Tuesday, January 19, 2010

WHERE: Ridgedale Library

TIME: 6:00 - 6:30pm - Meet at Dunn Bros on the second floor for some quick brainstorming
7:00pm - we'll move downstairs to the big meeting room

BRING: -Photographs that show you or your chapter members having fun working to raise money for any charitable event

-Photographs that show you or your chapter members having fun at a social event (either a State or Chapter social)

-Photographs that show you or your chapter members having fun at an educational event (either a State or Chapter educational)

Brochures or memorabilia from any of our ESA philanthropic endeavors (Philanthropic Chairs - if you are unable to come with these items, please let me know so I can make arrangements to pick up some items)

Scissors and anything else you might want to use, e.g., calligraphy pens, scrapbook-type cutouts, construction paper, glue, etc.

We'll be building a minimum of THREE Sales Kits. The Sales Kits will contain:

- A standing 3-sided poster board that displays the photographs and information about our Service (philanthropic), Educational and Association (social) activities
- A jump drive that you can plug in to your computer that contains:

1. A letter that you can use to deliver to the proposed target area that describes ESA
2. A flyer that you can use to provide information of where the Rush Event is to be held
3. A PowerPoint presentation on ESA
4. The ESA Pledge blank
5. Any other pertinent ESA information that will help toward Rushing

I'll bring the three 3-sided poster boards, some glue, and some construction paper and a lot of ideas. I'll show you how you can use these kits for a Rushing Event in your area and if you decide to try it, I'll come and help you at your Event.

State Chaplain → Sharon Desarmeaux

May today there be peace within. May you trust that you are exactly where you are meant to be.

May you not forget the infinite possibilities that are born of faith in yourself and others.

May you use the gifts that you have received, and pass on the love that has been given to you. May you be content with yourself just the way you are.

Let this knowledge settle into your bones, and allow your soul the freedom to sing, dance, praise and love.

It is there for each and every one of us.

Please remember the following in your thoughts and

prayers. Since the November Essay the following individuals and families need our thoughts and prayers.

Dorothy Wangen-Gamma Zeta-Daughter had successful kidney transplant.

Debbie Coolman-Sigma Kappa-Father had brain surgery. Beverly Landers-Alpha Chi-Having hip replacement surgery.

Bernice McCullough-Gamma Zeta-Sister passed away.

Linda Schultz-Beta Sigma-Having severe pain when walking.

Josie Ferguson-Holman-Beta Sigma-Emergency hernia surgery.

Joane Buche-Alpha Chi-Son passed away.

Hazel Humphrey-Beta Sigma-passed away.

Marie Schostag-Alpha Theta-passed away.

State Parliamentarian → Fran Voerding

Just a reminder:

I asked that every Chapter who had suggested changes to the current ByLaws to send the changes to me no later than January 15. I need the time to prepare the suggested changes for our meeting on February 6th. Several Chapters said they do not want changes to the ByLaws.

There were no suggested changes to the Standing Rules but they can be changed at a General Membership meeting. If you have changes send by email the changes including the Article number and the item change number. My email vec5@q.com.

MN State Corresponding Secretary 2009-10

Dana Terry

1) Pat Kittleson of Delta Omicron has a new e-mail address: pkittleson@comcast.net

2) Jo Hanson of Beta Sigma now has working e-mail at home: jobunny7@comcast.net. Request: If you need an answer from me right away, use my Cargill address because that's where I am most of the time. I only go into my home box about twice a week, and I'm totally out of the habit of it right now, so may not be very diligent for a while. Soooo...if you need to get information to me or ask something of me, continue to send to my work address. Other things like stories, jokes, etc., please send to my home e-mail address. Thanks for your patience.

Thank You

A sincere Thank You to all my ESA sisters for the kind thoughts, cards and memorial donations for my sister Ruth Baker. I am so thankful for all your remembrances and it was so good to hear from many that I have not seen for a while. Thank you again, your good wishes are very heartwarming and mean so much to me. Bernice McCullough.

Thank you to all my sisters for their wonderful response in the passing of our son Jeff Buche. All your thoughts, prayers and cards were very much appreciated. My Alpha Chi chapter are a great support group. A special thank you to Diane, our president and her husband for driving all across town for the service. The scooter is empty and Jeff is now playing golf, tennis, basketball and hockey. Joane and Ralph Buche

ESA Foundation → Karla Kay Nicklaus

"Serving the World Community...Because We Care"

Two very important deadlines coming in the New Year....

1) Scholarship deadline is February 1, 2010 - to download an application go to www.esaintl.com/esaf
~ Click on ESA Foundation Scholarship Application and

Guidelines. Print the application.
~ Go back to items under ESA Foundation Scholarship and click on Current List of ESAF Scholarships by State.
~ Click on STATE to learn which scholarships are applicable for Minnesota

residents. Print the list.
~ You may apply for three scholarships. You must have three copies of all materials to apply for three scholarships, including \$5.00 per application.
2) ESA Foundation dues are due March 1, 2010 - new member fee-\$25, and

annual dues-\$15.00, life membership-\$500.00. College application and membership renewal of dues forms are available by calling me (612/724-6712).

Have a Happy New Year!

MINNESOTA ESSAY *chapter reports*

Beta Theta

Fran Voerding

Greetings from Beta Chapter! We wish all of you a 1020 year filled with success, good health and sunny days.

Fran Voerding because of the mountains of snow, icy sidewalks I spent most of my holidays at home. My family stopped to visit but they also spent much of their time at home. My family in Texas are having some snow, not as much as we have and John (my son) said it melts away pretty fast.

Rhonda Krehl;
"Ed and I had both our sons, James and Timothy, here for Christmas. It was a great Christmas, lots of food, Jigsaw puzzles and adven-

tures. I have now walked on the railroad bridge near our house and on the frozen Mississippi straight back from our backyard! Alas, I cannot throw a snowball as well as in my youth. James is a very good photographer; his Christmas present to me was a beautiful photograph of a damsel fly he took at a pond very close to our previous home. Timothy is setting up our treadmill (with television) as his Christmas present. Ed and I will be able to exercise no matter how cold it is; I think that is a good thing. Now they have gone home, it's sad to see so few shoes in the mud room."

DeLores Wiesner;
"Ray & I had to cancel our winter plans. We are staying home. Ray has health issues that we want to handle here." She also said "A Happy Health New year to all"

Geri and Bob Johnson.
"We took in a play or 2- The Christmas Carol at the Guthrie and Beauty and the Beast at the Ordway. We went over the river and through the snow for Christmas Eve and Christmas Day at our son's home. And now, the Christmas decorations must come down. All for a beautiful Christmas Holiday! Happy New Year to all."

December is always a big time for the Alpha Sigma Gals. We went to a play on Sunday Dec. 6th for our Christmas party at the Seasons Dinner Theater next to Bunker Hills in Coon Rapids. Very good food and a cute little play.

Diane Vanusek spent Christmas in Wisconsin at her son's home with the kids and a bossy three year old telling her how to play video games. The snow was beautiful and the drive home was a winter wonderland, but the five foot snow/ice pile in the driveway was not. Don appreciated his Christmas present of a few years ago to blow it out.

Sharon Lange finally got her bedroom painted - very warm and cozy in gold and Ivory. She enjoyed the holidays with shopping, wrapping, and attending her Christmas Eve and Christmas Day with family and is looking forward to the New Year.

Nancy had her oldest daughter Brenna's family over from Wisconsin. Sienna is now 1 and a half and is a real charmer. Christmas really comes alive when there is a

little one to open the presents. We are so excited that there is another sister or brother due at the end of June.

Our holidays were very nice with family and friends (both Thanksgiving and Christmas). We enjoyed the Chapter Christmas outing about Scrapbooking. The food there was spectacular, and the evening with friends was even better. Not many companies have these any more, but I survived the company holiday party for 520 people. I was "lucky" enough to do all the planning for the event (casino night, dinner, dancing, hotel accommodations, etc). Jim and I are leaving next week for a trip to visit Andy and Annie in Alabama. Right now we're watching the Alabama vs Northwestern game on TV. Andy is covering this bowl game in Tampa for his newspaper. We're always hoping they'll show the reporters in the sports box, but they never do! :(Happy New Year to all!
Rose

Made it through Christmas in fine style. Santa even brought ME gifts ... so for all those who might have

thought I have been naughty ... YOU were wrong.

I am looking into some ways to spend my retirement time. Have gone to the local Senior Center and wow do they have stuff to do. So I know I can find a few days full at those projects and of course some ESA volunteering as well. At one of the ESA workshops I have attended I heard to get yourself organized you should toss out 17 things each day. That could be a piece of junk mail or a piano -- each thing counts as ONE item. So I have started doing that and some days I barely get 17 and other days I am well over 100. My bathtub that has been my storage room is getting all cleared out (before I start collecting again for auction) . I went to add a Christmas present blouse to the closet and it did not fit because my closet is a mess. So, I guess I have another project to tackle. No one said retirement projects would go on and on and on and on.
Birdie

Alpha Sigma is looking forward to a great new year and helping Diane, our Illustrious President, with the rest of her year.

Alpha Chi December News Our November started out with several of our members attending the St. Jude Style Show. I have always attended with my four daughters and three granddaughters, but this year I was in bed with a virus. It just wasn't the same, but my family thoroughly enjoyed themselves.

Our monthly meeting on November 14th was hosted by Kathy Konrad at the manufacturing company that she and her husband Ken own in Hudson, Wisconsin. Ken gave us a wonderful tour of their plant and explained the whole operation of how it functions. Following that, Kathy served us a delicious lunch in the employees lunch room. We all donated toward the lunch, presented the proceeds to Kathy who in turn donated them to the St. Croix Women's Shelter. It was an extremely worthwhile day with most of our members able to attend. Thanks Kathy and Ken!

Phyllis Frascone reported that she and her husband Jim have been filling draw string bags with supplies for God's

Closet, several grade schools, and the Ramsey County Shelter for Battered Women. They are always thinking of ways to help others with the help of Colleen Riley who spends many hours sewing the bags. Phyllis would like to encourage anyone who enjoys Neil Diamonds type of singing to purchase his new CD as Neil has been very instrumental in helping Phyllis' son in Texas to rebuild his home after it was destroyed in the hurricane last year.

Kathy and Stan Rice have just returned from another wonderful trip to Branson. This is their fourth trip this year.

Nora and John Meyers have also been to Branson this month, but did not run into the Rice's.

Kathy and Ken Konrad took a daughter and her family to Disney World and enjoyed following the grandchildren around.

Shirley Hane reports that she has been doing a lot of "scrapbooking" with her friends. It's a great pastime. Bev Landers is having a hip

replacement on November 30th. We all wish her the best of luck and a speedy recovery so she can join us again at our Wednesdays at MedTox!

Our entire chapter sends their sincere sympathy to Ralph and Joane Buche on the recent death of their son, Jeff. Jeff was only 47 years old and leaves his wife and three children who will truly miss him. He suffered for the past four months and is now at peace. We love you Ralph and Joane and I am sure we also speak for the rest of your Minnesota Sisters.

I will just add that our December Christmas Party was a huge success at the Sheraton Hotel in Woodbury on December 5th. The weather held out for us and all were in attendance. And now my husband and I are enjoying a visit from our son and daughter-in-law plus our two grandchildren (ages 2 and 5) from Atlanta until the 5th of January. It is truly a wonderful gift for us to watch them grow and get a chance to play in real snow. So much fun!!Have a great New Year.

Alpha Theta

Mary Jane Rosenberg

Happy New Year! Where did 2009 go to? Also, where did the last 9 years go--but aren't we lucky to be able to see the starting of the next decade.

I'm hoping everybody had a wonderful Christmas even if God gave us some terrible weather.

Things that have been gone in our chapter: We were all saddened by the death of a member, Marie Schostag. She was one of the blonde twins--Marian had preceded her six years ago from heart surgery. They were always fun, good workers and supporters of our chapter.

Even with the few of us, we still remain an active chapter--doing one of the following things this season:

Rose Marie, Florence and sis-

ter Eunice rang the Salvation Army Bells for six hours in one day (Gloria and I had a funeral at our church so we were unable to help).

We supported 3 Caring Sharing Trees--Mankato, New Ulm and Lake Crystal.

Marge, Hazel and Priscilla (Rose Marie's mom) were able to go with us to the our Christmas luncheon. We met at the "Neighbors" -- where it was last year -- ended up not having a very good waitress and to top it all off -- terrible food! Believe me, we will not go there again, for a long time!

Florence's great-nephew has come and was named Ben. Everyone is fine and the makes her a great-aunt to 1 girl and 2 boys. Marie goes to her son's in Chaska for

Christmas. Rose Marie is doing a great job of caring for her Mom. Gloria's brother and family come on Sunday after Christmas from Sioux Falls. My son and family come on Christmas Day and got to enjoy them until Tuesday morning. My other daughter-in-law broke her foot--so this mother-in-law is driving her to places. She would do it for me -- I know.

I'm hoping every body will have a wonderful, healthy New Year. Also, thank you for the extended sympathies to our chapter for Marie.

Quote of the month, coming from Andy Rooney: Everyone wants to live on top of the mountain, but all the happiness and growth occur while you're climbing it.

Sigma Kappa

Karen Ronning

Karen & Casey
In November a group of us participated in the Giving Walk at the MOA for St. Jude. Thanks to the donations from several of our sisters, family, and friends; Team ESA raised \$1200!!

We had a wonderful Christmas Party at Jake's in Eden Prairie. Instead of purchasing gifts for each other, we adopted children through Volunteers of America and supported them instead.

Debbie
What a busy Christmas Season it has been. I'm happy to report that my dad

is on the mend from his surgery and blood clots. It has been an emotional roller coaster ride, but I'm glad I was able to be back in MN for Christmas to enjoy reflecting on the most wonderful gift of the Christmas Season, Jesus. Jeff and I went to Christmas Eve services to celebrate the birth of Jesus and then enjoyed going for a walk through our neighborhood to look at Christmas lights during the winter storm.

2009 was an interesting year for our house, but by the grace of God we have drawn closer to Him and are

looking forward to the wonderful things He has planned for us in 2010.

Dana
Not much to tell for Quinn and me. I'm just extra busy at work while Quinn has had his hours cut to 32/week. I've been bitten by the scrap-booking bug (thanks to you, Karen!) and Quinn is rebuilding a 1975 Harley Davidson with his uncle.

I'm slowly getting back into the swing of ESA things - my calendar is going to fill up again soon, I can already tell! Happy New Year to ALL!!

Beta Sigma

Jo Hanson

Greetings from your Beta Sigma sisters. By the time you read this, Christmas 2009 will be a pleasant memory and a brand new year full of opportunities and blessings will be before us.

We have missed recent issues and have much to share with all of you. Jackie Swanson is overjoyed to share that she is employed! Starting November 16th, Jackie will be working at the Minnesota Historical Society as an Administrative Secretary. We are all thrilled for Jackie as she begins a new chapter in her work life.

Mona Peck has been rebuilding her main bathroom at home, and it is beautiful. It was a challenge to have to go to the party room in her complex to shower every day...NOT FUN! However, the inconvenience was worth it; the new step in shower and gorgeous cabinets are a joy.

Dina Strachota just celebrated her first wedding anniversary on November 8th. She and her husband celebrated with a dinner at Olive Garden. Dina is keeping busy with her newest activity as a member of the choir at her church.

Leann Monahan's life has

been like a roller coaster ride recently, and she would LOVE to get off. She says, "I'm ready for some beautiful white snow to cover all the gray and enjoy the twinkling of Christmas lights." Leann would also like to say, "Thank you very much for the kind words, thoughts and prayers when my mother died. I can't tell you how much they were appreciated. You are all wonderful sisters for an only child!"

Karla Kay Nicklaus is going to Benson for the University of Iowa / Minnesota football game. Go Hawks!

Betty and Fred Kickertz are planning a pre-Christmas trek to New York City from December 17th to December 22nd to visit old and new "haunts" from when they lived out on Long Island in the town of Huntington.

Bonnie Olson is looking forward to a visit from her daughter, Lynne, and her granddaughters over the Thanksgiving holiday. This is a driving trip since granddaughter, Sarah has her license and will be doing some of the driving.

We closed our November meeting by packing four

boxes of goodies and necessities for our military as part of the Hope for Heroes program. It was fun and there was lots of laughter and love packed in those boxes.

On December 12th, all of us gathered at the home of Kay Fogarty for our annual Christmas Party. As always, Kay's home was beautifully decorated and the food was plentiful and delicious. We took a break at 11:30 a.m. to attend the funeral of our dear sister, Hazel Humphrey, who passed away on December 8, 2009. The service was beautiful and there were 14 of us present to share in the Closing Ritual at the close of her service. The celebration of Hazel's life closed with the singing of When Irish Eyes are Smiling. We returned to Kay's to open gifts and to toast our sister on her journey home.

Beta Sigma once again adopted a family from St. Anne's Place, so Jo had a car full of colorful bags and wrapped gifts to deliver on the 13th of December.

We hope all of you had a wonderful holiday and are looking forward to a busy, healthy, Happy New Year.

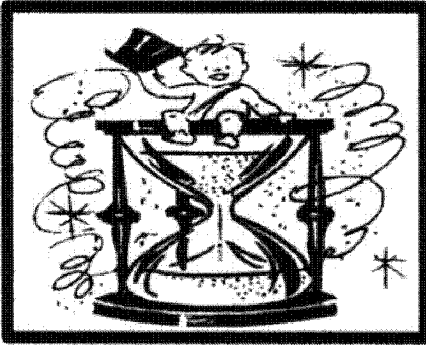


epsilon sigma alpha
MINNESOTA ESSAY

**edited and
produced by**

Jennifer Maleitzke
groebnj1@yahoo.com
651-270-0239

There's Magic In the Air



State Membership Meeting and Leadership January 23, 2009

8:30 Coffee Time

9:15 "While you have life...live life" Jeanne E Rogers

10:00 Business Meeting

11:00 "Conflict Resolution Without Clobbering One Another"

Jeanne Zimmer, Exec. Dir. Dispute Resolution Center

12:30 (or so) Lunch and socializing

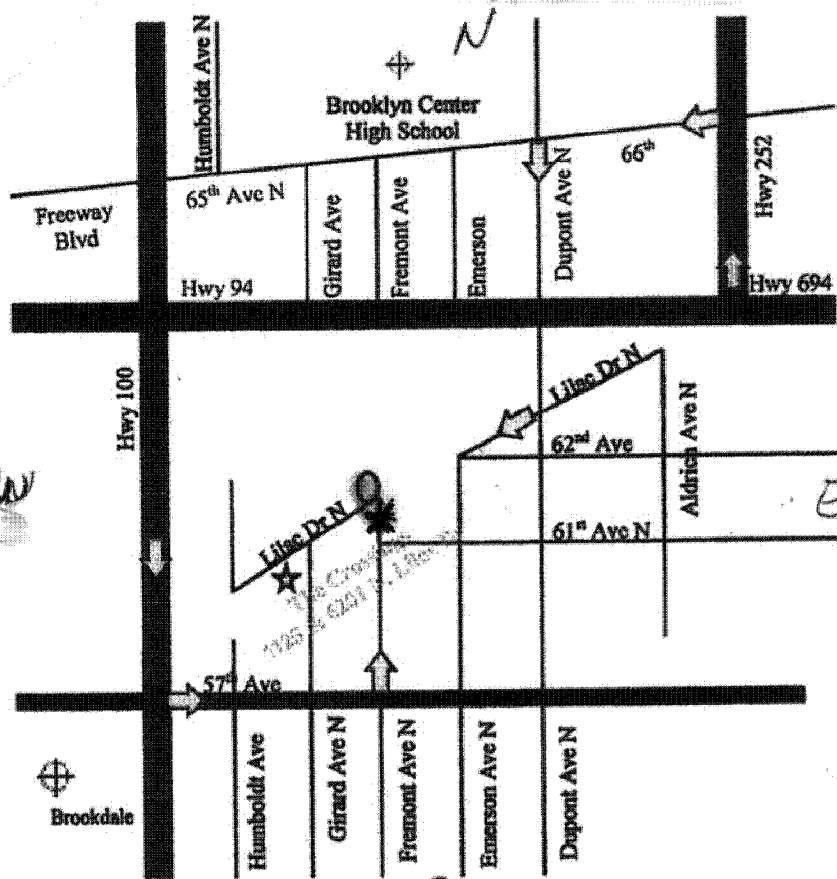
From south 100.....Exit on John Martin Dr/57th Ave No
Right on 57th to Fremont
Left on Fremont to 61st and The Crossings

From 694 East or 94 South.....Exit on 252 No to 66th
Left on 66th to Dupont
Left on Dupont to 61st
Right on 61st at Fremont to the Crossings

From West 694/94....Exit on Shingle Creek Pkwy
Right on Shingle Creek to Freeway Blvd
Right on Freeway Blvd to Dupont
Right on Dupont to 61st
Right on 61st at Fremont to the Crossings

If you get lost give call Mary Tolle. Home 763-520-9113
+ RSVP: Cell 612-240-0717

The Crossings at Brookwood (A 5-story Brick building)
6201 No Lilac Dr. Brooklyn Center.
Please use the Rental Office Entrance



Hosted by Gamma Zeta Chapter

Minnesota Council Nomination Form

Office: _____
Name: _____

Chapter: _____

In good standing with the Chapter and International? Yes _____ No _____

A Jewel pin member? Yes _____ No _____

List all previous offices held:

	Office	Year
State	_____	_____
	_____	_____
	_____	_____
	_____	_____
	_____	_____
	_____	_____
	_____	_____
	_____	_____
Chapter	_____	_____
	_____	_____
	_____	_____
	_____	_____
	_____	_____
	_____	_____
	_____	_____
	_____	_____

Other Qualifications: Please write a paragraph which could be read at the Campaign Rally describing other qualifications of this candidate, and why they are qualified for the position.

This is respectfully submitted by: _____
Chapter of MN Epsilon Sigma Alpha Int'l: _____

**MINNESOTA ESA STATE CONVENTION
'THE GREAT MINNESOTA GET TOGETHER'
APRIL 30-MAY 1-2, 2010
MARRIOTT MINNEAPOLIS WEST
9960 WAYZATA BLVD., ST. LOUIS PARK, MN 55426**

Name _____

Chapter _____

Address _____

City/ State/ Zip _____

Phone _____ Guest _____

Registration Deadline: Friday, April 16, 2010

Full Registration: \$ 100.00 \$ _____

Partial/Guest Registration:

Member Registration Fee \$15.00 _____

Friday Mixer \$22.00 _____

Saturday Lunch \$23.00 _____

Banquet (Per Person) \$40.00 _____

Sunday Breakfast \$12.00 _____

For a partial registration, please indicate the events attending – plus registration fee.

Partial Total: \$ _____

Late Registration: \$10.00 (after April 16) \$15.00 Cash for Walk-in

Circle all that apply: State Elected Officer State Appointed Officer Pledge

Foundation Chair/Committee MARC Representative/Officer

I C Officer/Committee Chapter Delegate 1st Time Convention Attendee

MAKE CHECK PAYABLE TO: MINNESOTA STATE ESA

MAIL FORM AND CHECK TO: Shirley Laue

8080 Woodland Trail, Rockford, MN 55373

Room Rate: \$79.00—if booked by April 9, 2010 – **CALL 952-544-4400**
(1 to 4 people) (King-queen suite--\$109.00)